



EV Charging Solution

DC Charger / City Charger 200 kW

- 200kW fast charging with ≥ 96 % efficiency
- Complete system integration for better charging services
- Advanced service support for optimal operation



Highway
Service



Parking



Service
Station



Commercial
Areas



Traffic
Hub



Speed up Urban Life with EV Fast Charging

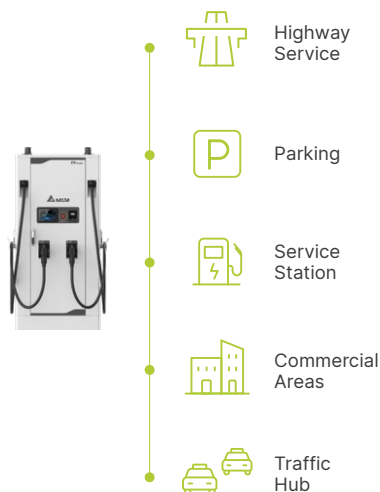
Delta City Charger 200kW provides high-efficiency charging service for EV charging stations. With dual outputs and dynamic load distribution, it can serve 2 EVs simultaneously, which boosts the turnover at the charging station. Its industry-leading $\geq 96\%$ efficiency

performance saves energy significantly. It is also compatible with OCPP, allowing backend integration, such as user identification, remote monitoring and control.

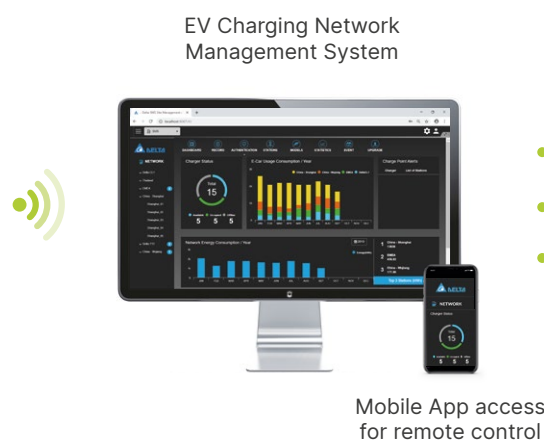


Application Scenario

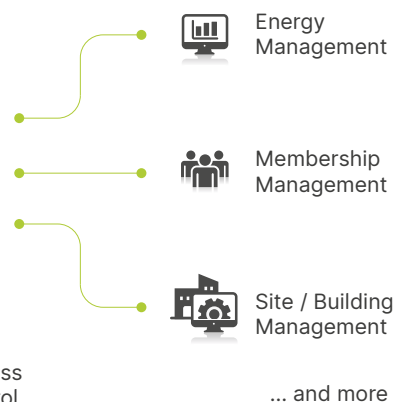
Charging Network



Backend Office



Applications



Feature Highlights



200kW fast charging
with $\geq 96\%$ efficiency

- Up to 200kW output per connector
- Charge two vehicles simultaneously with max. 200kW output
- Dynamic load distribution optimizes charging services



Complete system integration
for better charging services

- Supports OCPP 1.6J for backend office integration
- RFID and credit card reader conducts user identification and payment transactions



Advanced service
support for optimal operation

- Supports remote diagnostics channel and alarm code synchronization
- Supports OTA firmware updates
- Remote troubleshooting instruction

Product at a Glance

Network Connectivity
Ethernet, Cellular, WLAN

User Authentication
Credit card, RFID reader,
ISO 15118 PnC*

Charging Standard
CCS1

Protection
NEMA 3R, IK10



Pluggable Power Module

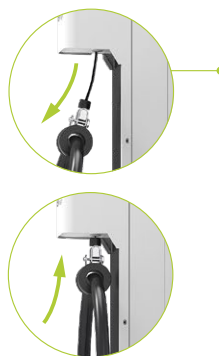
Cable Management

Balancing System for City Charger

A pair of balancing system stands is needed to manage the charging cables of dual-connector models. The design utilizes the weight stacks, paracord, and pulleys to balance the pull force on the charging cable. It provides a better user experience by helping the users hold the cable, move the charging cable, and return the charging cable more easily. In addition, the mechanism holds the cable so that it will be well organized instead of lying on the ground.

On-side Installation

Front side Installation



Balancing system for helping
users hold and move charging cable easier.

Specifications

Part Number	EIDS-U200TS
Description	200kW Dual Output DC Charger
Power Input	
Input Rating	480 Vac, 3-Phase, L1, L2, L3, PE, 60 Hz
Power Factor	0.99
Efficiency	≥ 96 %
Power Output	
DC Output Interface	CCS1 + CCS1
DC Output Voltage	150 - 950 Vdc
DC Output Current	300 A, peak 400 A
Protection	
Protection	Over current, Under voltage, Over voltage, Surge protection, Short circuit, Over temperature, Ground fault
User Interface	
Network Interface	Ethernet, Cellular, WLAN
Protocol	Backend system integration with OCPP 1.6
Authentication	ISO / IEC 14443 A / B RFID, Credit card reader (Optional)
Display	7 inch touch LCD panel
Supported Language	English (Additional languages available on request)
Button	Emergency button
Environmental	
Operating Temperature	Operating from -22 °F to 104 °F (-30 °C to +40 °C); De-rating from +104 °F to +122 °F (+40 °C to +50 °C)
Storage Temperature	-40 °F to 185 °F (-40 °C to +85 °C)
Humidity	< 95 % relative humidity, non-condensing
Altitude	6,500 ft. (2,000 m)
Mechanical	
Ingress Protection	NEMA 3R
Enclosure Protection	IK10 according to IEC 62262
Cooling	Forced air
Dimension (W x H x D)	33.5 × 70.9 × 26.8 inch (850 × 1800 × 680 mm)
Weight **	926 lbs (420 kg)
Cable length	4 m (Standard), 7 m (Optional)
Regulation	
Certificate	UL
Installation	
Accessory	Cable management

* ISO 15118 PnC and OCPP 2.0 in plan.

** Excluding charging connector cable.

Product outlook depends on configuration. Specifications are subject to change without notice.

Item	Cable Management
Manageable cable length	4 m
Placement	Front sides of charger, on-site installation
Dimension (W x D x H)	110 × 235 × 1800 mm, 32 kg
Recoiler cable length	2.6 m with paracord inside
Internal counterweight	Depending on the weight of the charging cable



More information

Delta Electronics (Americas) Ltd.

46101 Fremont Boulevard Fremont, CA94538, U.S.A

TEL : +1 510 668

E-mail : evcs@deltaww.com

evcharging.deltaww.com

Delta Electronics Inc.

16 Tungyuan Road, Chungli Industrial

Zone, Taoyuan City 32063, Taiwan

TEL : +886 3 4526107



2022/04